



Scales and Arpeggios for Grades 1 to 5

for Trombone in Bass Clef

Scales and Arpeggios for Grades 1 to 5

Grade 1

from memory, to be played both tongued with legato tonguing in the following keys:

Bb major



C minor



Grade 2

from memory, to be played both tongued with legato tonguing in the following keys:

Ab major

Two staves of musical notation for Ab major. The first staff is in 4/4 time and contains a sequence of eighth notes: Ab, Bb, C, D, Eb, F, G, Ab, Bb, C, D, Eb, F, G, Ab. The second staff is in 6/8 time and contains a sequence of eighth notes: Ab, Bb, C, D, Eb, F, G, Ab, followed by a whole note Ab.

C major

Two staves of musical notation for C major. The first staff is in 4/4 time and contains a sequence of eighth notes: C, D, E, F, G, A, B, C, D, E, F, G, A, B, C. The second staff is in 6/8 time and contains a sequence of eighth notes: C, D, E, F, G, A, B, C, followed by a whole note C.

D minor

Two staves of musical notation for D minor. The first staff is in 4/4 time and contains a sequence of eighth notes: D, E, F, G, Ab, Bb, C, D, Eb, F, G, Ab, Bb, C, D. The second staff is in 6/8 time and contains a sequence of eighth notes: D, E, F, G, Ab, Bb, C, D, followed by a whole note D.

C minor

Two staves of musical notation for C minor. The first staff is in 4/4 time and contains a sequence of eighth notes: C, D, Eb, F, G, Ab, Bb, C, D, Eb, F, G, Ab, Bb, C. The second staff is in 6/8 time and contains a sequence of eighth notes: C, D, Eb, F, G, Ab, Bb, C, followed by a whole note C.

Grade 3

from memory, to be played both tongued with legato tonguing in the following keys:

Eb major

Two staves of musical notation for the Eb major scale. The first staff is in 4/4 time, showing the scale from C2 to C3. The second staff is in 6/8 time, showing the scale from C2 to C3.

D major

Two staves of musical notation for the D major scale. The first staff is in 4/4 time, showing the scale from D2 to D3. The second staff is in 6/8 time, showing the scale from D2 to D3.

D minor

Two staves of musical notation for the D minor scale. The first staff is in 4/4 time, showing the scale from D2 to D3 with a sharp sign on the F note. The second staff is in 6/8 time, showing the scale from D2 to D3.

Ab major (12th)

Two staves of musical notation for the Ab major (12th) scale. The first staff is in 4/4 time, showing the scale from C2 to C3. The second staff is in 6/8 time, showing the scale from C2 to C3.

G minor (12th)

Two staves of musical notation for the G minor (12th) scale. The first staff is in 4/4 time, showing the scale from C2 to C3 with a sharp sign on the F note. The second staff is in 6/8 time, showing the scale from C2 to C3.

Chromatic Scale starting on C

One staff of musical notation for the Chromatic Scale starting on C in 4/4 time, showing the scale from C2 to C3.

Grade 4

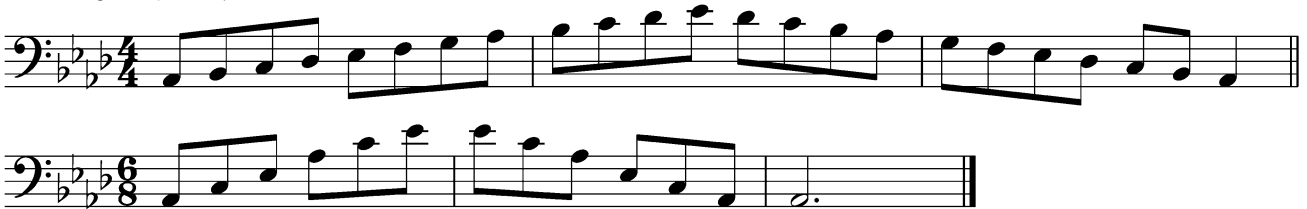
Db major from memory, to be played both tongued with legato tonguing in the following keys:



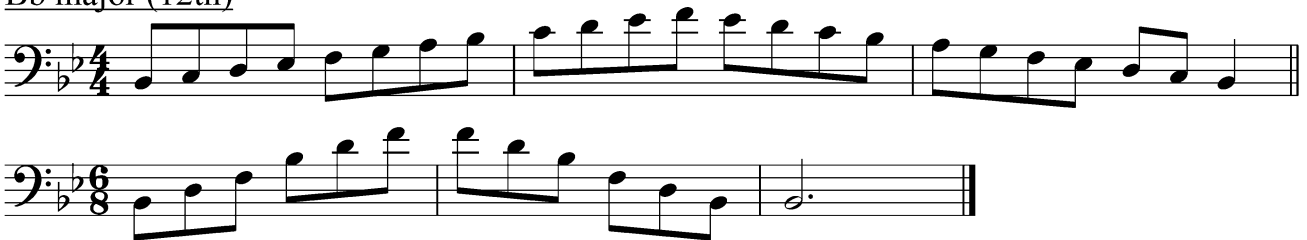
E minor



Ab major (12th)



Bb major (12th)



G minor (12th)



Chromatic scale starting on Eb



Grade 5

from memory, to be played both tongued with legato tonguing in the following keys:

A Major (12th)

Two staves of musical notation for A Major (12th). The first staff is in 4/4 time, and the second staff is in 6/8 time. Both staves use a bass clef and a key signature of three sharps (F#, C#, G#).

C Minor (12th)

Two staves of musical notation for C Minor (12th). The first staff is in 4/4 time, and the second staff is in 6/8 time. Both staves use a bass clef and a key signature of three flats (F, C, G).

F Major (2 octaves)

Two staves of musical notation for F Major (2 octaves). The first staff is in 4/4 time, and the second staff is in 6/8 time. Both staves use a bass clef and a key signature of one flat (Bb).

F# Major (2 octaves)

Two staves of musical notation for F# Major (2 octaves). The first staff is in 4/4 time, and the second staff is in 6/8 time. Both staves use a bass clef and a key signature of four sharps (F#, C#, G#, D#).

G Major (2 octaves)

Two staves of musical notation for G Major (2 octaves). The first staff is in 4/4 time, and the second staff is in 6/8 time. Both staves use a bass clef and a key signature of one sharp (F#).

F Minor (2 octaves)

Two staves of musical notation for F Minor (2 octaves). The first staff is in 4/4 time, showing a two-octave scale starting on F2. The second staff is in 6/8 time, showing a two-octave scale starting on F2.

G Minor (2 octaves)

Two staves of musical notation for G Minor (2 octaves). The first staff is in 4/4 time, showing a two-octave scale starting on G2. The second staff is in 6/8 time, showing a two-octave scale starting on G2.

Chromatic Scale starting on F (2 octaves)

Two staves of musical notation for a chromatic scale starting on F (2 octaves). The first staff is in 4/4 time, showing a two-octave chromatic scale starting on F2. The second staff is in 4/4 time, showing a two-octave chromatic scale starting on F2.

Dominant 7th in key of Bb

One staff of musical notation for a dominant 7th chord in the key of Bb. The staff is in 4/4 time, showing a two-octave scale starting on Bb2.

Scales and Arpeggios for Grades 1 to 5

for Trombone in Treble Clef

Scales and Arpeggios for Grades 1 to 5

Grade 1

from memory, to be played both tongued with legato tonguing in the following keys:

C major



D minor



Grade 2

from memory, to be played both tongued with legato tonguing in the following keys:

Bb major

Two staves of musical notation for Bb major. The first staff is in 4/4 time, showing a sequence of eighth notes: Bb, C, D, Eb, F, G, Ab, Bb. The second staff is in 6/8 time, showing a sequence of eighth notes: Bb, C, D, Eb, F, G, Ab, Bb, followed by a dotted quarter note Bb.

D major

Two staves of musical notation for D major. The first staff is in 4/4 time, showing a sequence of eighth notes: D, E, F#, G, A, B, C#, D. The second staff is in 6/8 time, showing a sequence of eighth notes: D, E, F#, G, A, B, C#, D, followed by a dotted quarter note D.

E minor

Two staves of musical notation for E minor. The first staff is in 4/4 time, showing a sequence of eighth notes: E, F, G, A, B, C, D, E. The second staff is in 6/8 time, showing a sequence of eighth notes: E, F, G, A, B, C, D, E, followed by a dotted quarter note E.

D minor

Two staves of musical notation for D minor. The first staff is in 4/4 time, showing a sequence of eighth notes: D, E, F, G, Ab, Bb, C, D. The second staff is in 6/8 time, showing a sequence of eighth notes: D, E, F, G, Ab, Bb, C, D, followed by a dotted quarter note D.

Grade 3

from memory, to be played both tongued with legato tonguing in the following keys:

F major

Musical notation for the F major scale. The first staff is in 4/4 time, showing the scale ascending and descending. The second staff is in 6/8 time, showing the scale ascending and descending.

E major

Musical notation for the E major scale. The first staff is in 4/4 time, showing the scale ascending and descending. The second staff is in 6/8 time, showing the scale ascending and descending.

E minor

Musical notation for the E minor scale. The first staff is in 4/4 time, showing the scale ascending and descending. The second staff is in 6/8 time, showing the scale ascending and descending.

Bb major (12th)

Musical notation for the Bb major scale. The first staff is in 4/4 time, showing the scale ascending and descending. The second staff is in 6/8 time, showing the scale ascending and descending.

A minor (12th)

Musical notation for the A minor scale. The first staff is in 4/4 time, showing the scale ascending and descending. The second staff is in 6/8 time, showing the scale ascending and descending.

Chromatic Scale starting on D

Musical notation for a chromatic scale starting on D. The staff is in 4/4 time, showing the scale ascending and descending chromatically.

Grade 4

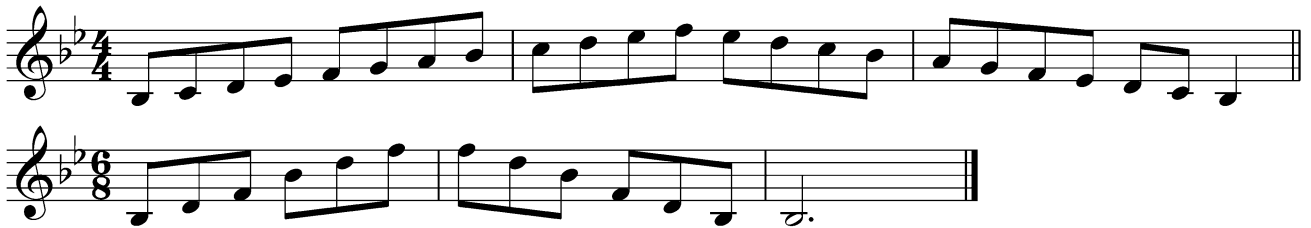
Eb major from memory, to be played both tongued with legato tonguing in the following keys:



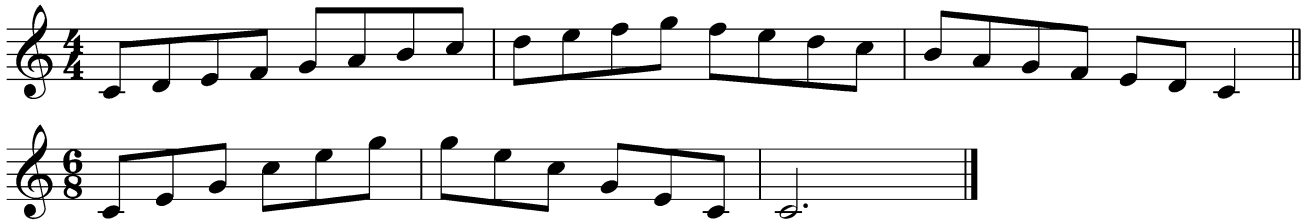
F# minor



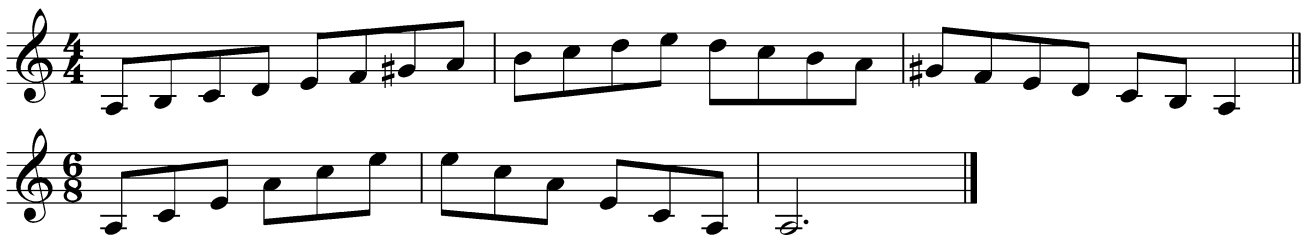
Bb major (12th)



C major (12th)



A minor (12th)



Chromatic scale starting on F



Grade 5

from memory, to be played both tongued with legato tonguing in the following keys:

B Major (12th)

Two staves of musical notation for B Major (12th). The first staff is in 4/4 time, and the second staff is in 6/8 time. Both staves show a sequence of eighth notes and quarter notes, starting on B4 and ending on B5.

D Minor (12th)

Two staves of musical notation for D Minor (12th). The first staff is in 4/4 time, and the second staff is in 6/8 time. Both staves show a sequence of eighth notes and quarter notes, starting on D4 and ending on D5.

G Major (2 octaves)

Two staves of musical notation for G Major (2 octaves). The first staff is in 4/4 time, and the second staff is in 6/8 time. Both staves show a sequence of eighth notes and quarter notes, starting on G4 and ending on G6.

Ab Major (2 octaves)

Two staves of musical notation for Ab Major (2 octaves). The first staff is in 4/4 time, and the second staff is in 6/8 time. Both staves show a sequence of eighth notes and quarter notes, starting on Ab4 and ending on Ab6.

A Major (2 octaves)

Two staves of musical notation for A Major (2 octaves). The first staff is in 4/4 time, and the second staff is in 6/8 time. Both staves show a sequence of eighth notes and quarter notes, starting on A4 and ending on A6.

G Minor (2 octaves)

Two staves of musical notation for G Minor (2 octaves). The first staff is in 4/4 time, showing the scale from G2 to G4. The second staff is in 6/8 time, showing the scale from G2 to G4.

A Minor (2 octaves)

Two staves of musical notation for A Minor (2 octaves). The first staff is in 4/4 time, showing the scale from A2 to A4. The second staff is in 6/8 time, showing the scale from A2 to A4.

Chromatic Scale starting on G (2 octaves)

Two staves of musical notation for a chromatic scale starting on G (2 octaves). The first staff is in 4/4 time, showing the scale from G2 to G4. The second staff is in 4/4 time, showing the scale from G4 to G2.

Dominant 7th in key of C

One staff of musical notation for a dominant 7th chord in the key of C. The scale is shown in 4/4 time, starting on C2 and ending on C4.