

# Scales and Arpeggios for Grades 1 to 5

for all treble clef instruments except the trombone and French Horn

# Scales and Arpeggios for Grades 1 to 5

## Grade 1

from memory, to be played both slurred and tongued in the following keys:

### C major



### A minor



## Grade 2

from memory, to be played both slurred and tongued in the following keys:

### Bb major

Two staves of musical notation for Bb major. The first staff is in 4/4 time, showing a sequence of eighth notes: Bb, C, D, Eb, F, G, Ab, Bb. The second staff is in 6/8 time, showing a sequence of eighth notes: Bb, C, D, Eb, F, G, Ab, Bb, followed by a dotted quarter note Bb.

### D major

Two staves of musical notation for D major. The first staff is in 4/4 time, showing a sequence of eighth notes: D, E, F#, G, A, B, C#, D. The second staff is in 6/8 time, showing a sequence of eighth notes: D, E, F#, G, A, B, C#, D, followed by a dotted quarter note D.

### A minor

Two staves of musical notation for A minor. The first staff is in 4/4 time, showing a sequence of eighth notes: A, B, C, D, E, F, G, A. The second staff is in 6/8 time, showing a sequence of eighth notes: A, B, C, D, E, F, G, A, followed by a dotted quarter note A.

### D minor

Two staves of musical notation for D minor. The first staff is in 4/4 time, showing a sequence of eighth notes: D, E, F, G, Ab, Bb, C, D. The second staff is in 6/8 time, showing a sequence of eighth notes: D, E, F, G, Ab, Bb, C, D, followed by a dotted quarter note D.

# Grade 3

from memory, to be played both slurred and tongued in the following keys:

## Eb major

Musical notation for Eb major scale in 4/4 and 6/8 time signatures. The 4/4 staff shows an ascending and descending scale. The 6/8 staff shows an ascending and descending scale.

## E major

Musical notation for E major scale in 4/4 and 6/8 time signatures. The 4/4 staff shows an ascending and descending scale. The 6/8 staff shows an ascending and descending scale.

## C minor

Musical notation for C minor scale in 4/4 and 6/8 time signatures. The 4/4 staff shows an ascending and descending scale. The 6/8 staff shows an ascending and descending scale.

## E minor

Musical notation for E minor scale in 4/4 and 6/8 time signatures. The 4/4 staff shows an ascending and descending scale. The 6/8 staff shows an ascending and descending scale.

## A major (12th)

Musical notation for A major scale in 4/4 and 6/8 time signatures. The 4/4 staff shows an ascending and descending scale. The 6/8 staff shows an ascending and descending scale.

## Chromatic Scale starting on C

Musical notation for Chromatic Scale starting on C in 4/4 time signature. The staff shows a chromatic scale starting on C, ascending and then descending.



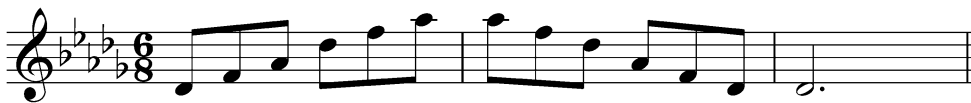
# Grade 5

from memory, to be played both slurred and tongued in the following keys:

## Bb Major (12th)



## Db Major (12th)



## Bb Minor (12th)



## C# Minor (12th)



## G Major (2 octaves)



Ab Major (2 octaves)

Two staves of musical notation for Ab Major. The first staff is in 4/4 time, showing an ascending and descending scale over two octaves. The second staff is in 6/8 time, showing a similar ascending and descending scale over two octaves.

G Minor (2 octaves)

Two staves of musical notation for G Minor. The first staff is in 4/4 time, showing an ascending and descending scale over two octaves. The second staff is in 6/8 time, showing a similar ascending and descending scale over two octaves.

Chromatic Scale starting on C (12th)

Two staves of musical notation for a chromatic scale starting on C. The first staff is in 4/4 time, showing the ascending and descending chromatic scale over 12 frets. The second staff is in 4/4 time, showing the same chromatic scale over 12 frets.

Dominant 7th in key of C

One staff of musical notation for a dominant 7th scale in the key of C. The staff is in 4/4 time, showing the ascending and descending scale over two octaves.